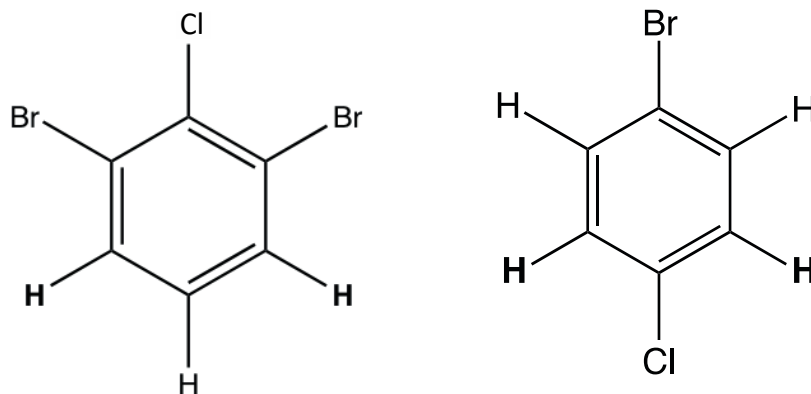


Jigsaw 3C

Home Section 3.3 and 3.4. Chemical and magnetic equivalence

1. Are the two bolded protons in the following molecule chemically or magnetically equivalent? What about the two bromine atoms (in the molecule on the left)?



2. For each of the following compounds, determine whether the protons are magnetically or chemically equivalent. Explain why.
- $\text{F}_2\text{C}=\text{C}=\text{CH}_2$
 - $\text{H}^{13}\text{C}\equiv^{13}\text{CH}$
 - 1-chloro-1-fluoroethene
 - $\text{HC}\equiv\text{C}-\text{CH}_2-\text{C}\equiv\text{CH}$